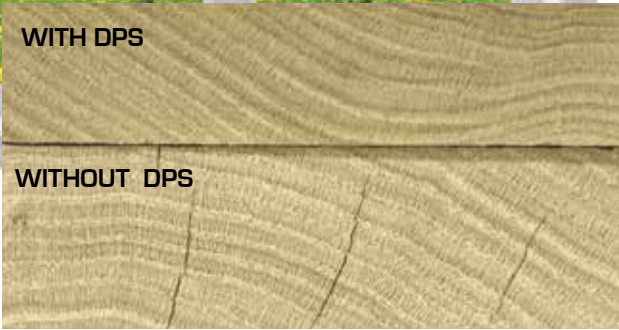




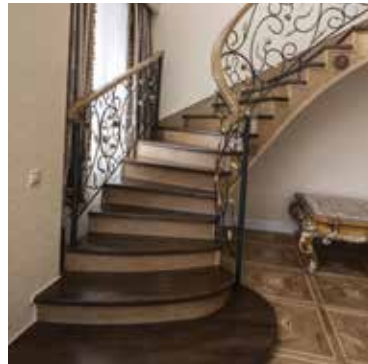
# BATES DPS<sup>®</sup>



## Dried Parts Stabilizer:

Coating that protects dried wood parts during storage, processing and shipment.

- Water-based, resin emulsion coating using nanotechnology polymers
- Controls moisture gain & loss due to humidity
- Non Hazardous
- Low VOC's
- No HAP's
- Environmentally friendly





# BATES DPS<sup>®</sup> DRIED PARTS STABILIZER

## BENEFITS:

Provides Dimensional Stability  
for Dried Wood Parts:

- Reduces End Splits
- Reduces Glue Joint Failure
- Controls Post-production Shrinkage, Swelling & Warping caused by humidity.
- Solvent -free
- Wax-free • Silicone-free
- Sandable
- Safer work environment, prevents need for harsh chemicals
- Quick-drying

## TYPICAL APPLICATIONS:

- Window & Door Production
- Stair Treads
- Architectural Moulding & Millwork
- Solid Wood Edge-glued Panels
- Turnings

## APPLICATION & COVERAGE:

- DPS is a semi-permeable coating that goes on clear and can be brushed or sprayed onto dried wood parts
- One gallon covers approximately 300-500 square feet, depending on application method
- Follow Best Practices

## WINDOWS & DOORS



## STAIR TREADS



## DIRECTIONS FOR USE

DPS can be used for most dried parts applications, including rough dimension stock and panels. It may also be used on wood parts prior to a finishing process in many cases. Test finishes and stains on samples prior to using in production. Surface must be dry, clean and free of loose particulate.

- Equipment:** DPS can be applied with a brush, roller or with spraying equipment. HVLP or airless sprayers are best.
- Application:** Apply a thin, even coat. Do not over-apply or allow coating to pool on surfaces. Allow to thoroughly dry.
- Clean-Up:** Use hot, soapy water to clean equipment. Solvent cleaners are not recommended or needed.

## PURCHASE OPTIONS

- Sizes Available:**
- 55-Gallon Drum (195kg)
  - 5-Gallon Pail (18.927L)

Ordering and pricing information:

US/CN Toll Free: 1-888-363-2628  
E-mail: [sales@ucoatings.com](mailto:sales@ucoatings.com)

Outside US/CN: +1-716-833-9366  
E-mail: [alvaro@ucoatings.com](mailto:alvaro@ucoatings.com)



## PROPERTIES & STORAGE

DPS is a stable, low odor, low voc, non-hazardous, nano-tech polymer and water emulsion.

DPS is non-wax, non-silicone, non-solvent, non-foaming, and ready-to-use.

DPS should be kept in temperature controlled areas above 50°F/10° and below 100°F/37°C , indoors.

DPS is not combustible unless dried and exposed to temperatures in excess of 400°F/205°C.

Winterized formulations are freeze stable. Protection from freezing temperatures is advised.

Seal containers tightly after use.

Appearance: Translucent white liquid that dries clear (unless pigmented)

Viscosity: 500 cPs ( 68°F/ 20°C), typical

Specific Gravity: 1.0 (68°F/20°C), typical

